

Art Department



Yael Gitai

www.art-dept.com

Art Department



Yael Gitai

www.art-dept.com

Art Department



Yael Gitai

www.art-dept.com

Art Department



Yael Gitai

www.art-dept.com

Art Department



Yael Gitai

www.art-dept.com

Art Department



Yael Gitai

www.art-dept.com

Art Department



Yael Gitai

www.art-dept.com

Art Department



Yael Gitai

www.art-dept.com

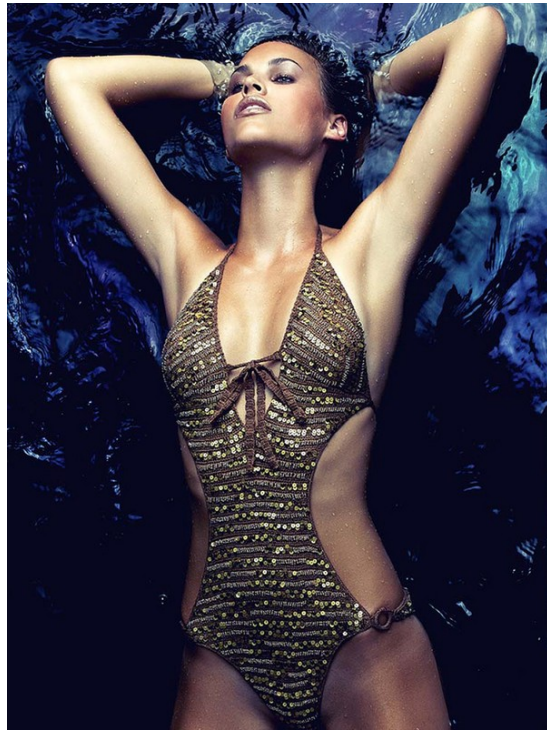
Art Department



Yael Gitai

www.art-dept.com

Art Department



Yael Gitai

www.art-dept.com

Art Department



Yael Gitai

www.art-dept.com

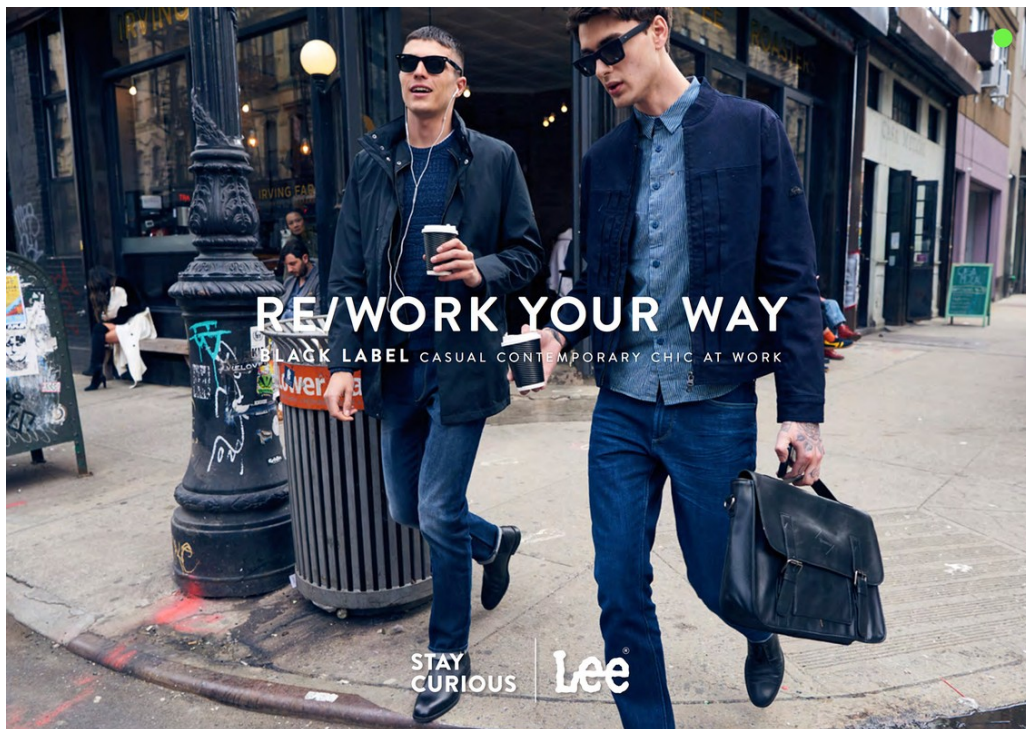
Art Department



Yael Gitai

www.art-dept.com

Art Department



Yael Gitai

www.art-dept.com

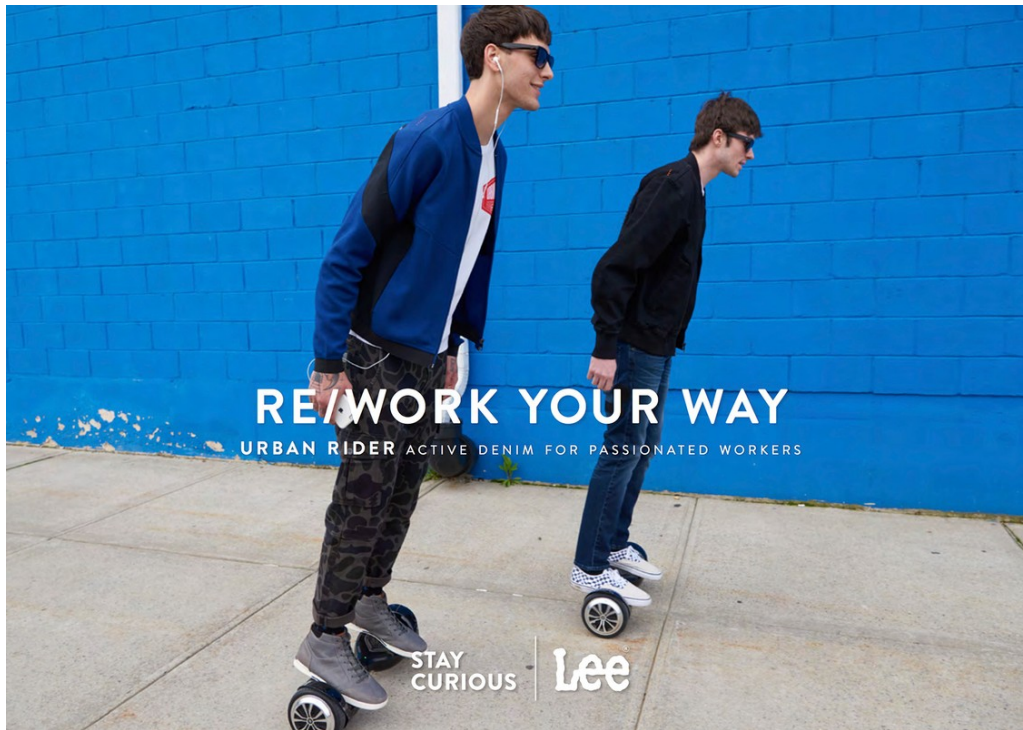
Art Department



Yael Gitai

www.art-dept.com

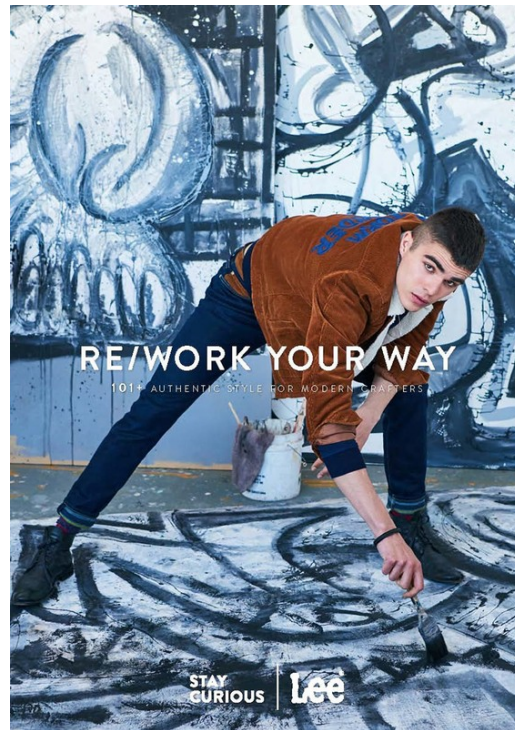
Art Department



Yael Gitai

www.art-dept.com

Art Department



Yael Gitai

www.art-dept.com

Art Department



Yael Gitai

www.art-dept.com

Art Department



Yael Gitai

www.art-dept.com

Art Department



Yael Gitai

www.art-dept.com

Art Department



Yael Gitai

www.art-dept.com

Art Department



Yael Gitai

www.art-dept.com

Art Department



Yael Gitai

www.art-dept.com

Art Department



Yael Gitai

www.art-dept.com

Art Department



Yael Gitai

www.art-dept.com

Art Department



Yael Gitai

www.art-dept.com

Art Department



Yael Gitai

www.art-dept.com

Art Department



Yael Gitai

www.art-dept.com

Art Department



Yael Gitai

www.art-dept.com

Art Department

advertisement



Styled by Suave

FASHION STAR
Tuesday March 13

Competition is a beautiful thing. Just ask Suave Professionals® stylist Theodore Leaf. Each week, Theodore and his team create showstopping hairstyles on NBC's new reality series Fashion Star. Check out his behind-the-scenes tips and step-by-step guide to getting the looks that rocked the runway.

© 2012 The Clorox Company. All rights reserved. Suave Professionals is a registered trademark of The Clorox Company.

advertisement

1 click. 3 looks

Hover your smartphone over this size and Like Suave/beauty® on Facebook for access to behind-the-scenes how-to videos with Theodore Leaf.

Side-Swept Waves

HAIR FRESH: Spray Suave Professionals® Dry Shampoo on the front section of your hair. Rubbing on the roots to add texture and volume.

STEP ONE: Create a side part and swing with a read of Suave Professionals® Touchable Finish Lightweight Mist Hairspray.

STEP TWO: Divide hair in 4-inch sections, starting from the bottom-up, and use a 1 1/2 inch curling iron to create waves.

STEP THREE: Sweep hair from the smaller side to the opposite side, secure in place with pins and spray ends of hair with Suave Professionals® Touchable Finish lightweight mist hairspray.

Top Knot

STEP ONE: Start by making a ponytail that sits centrally above the top of your neck and secure it with a hair tie.

STEP TWO: Spray product with Suave Professionals® Touchable Finish Lightweight Mist Hairspray and hold until it dries to the touch.

STEP THREE: Wrap the ends into the knot and secure with pins.

STEP FOUR: Finish with Suave Professionals® Moist Shine Spray.

Braided Bun

HAIR FRESH: Spray hair with Suave Professionals® Dry Conditioner. Run into ends to the ends of your hair.

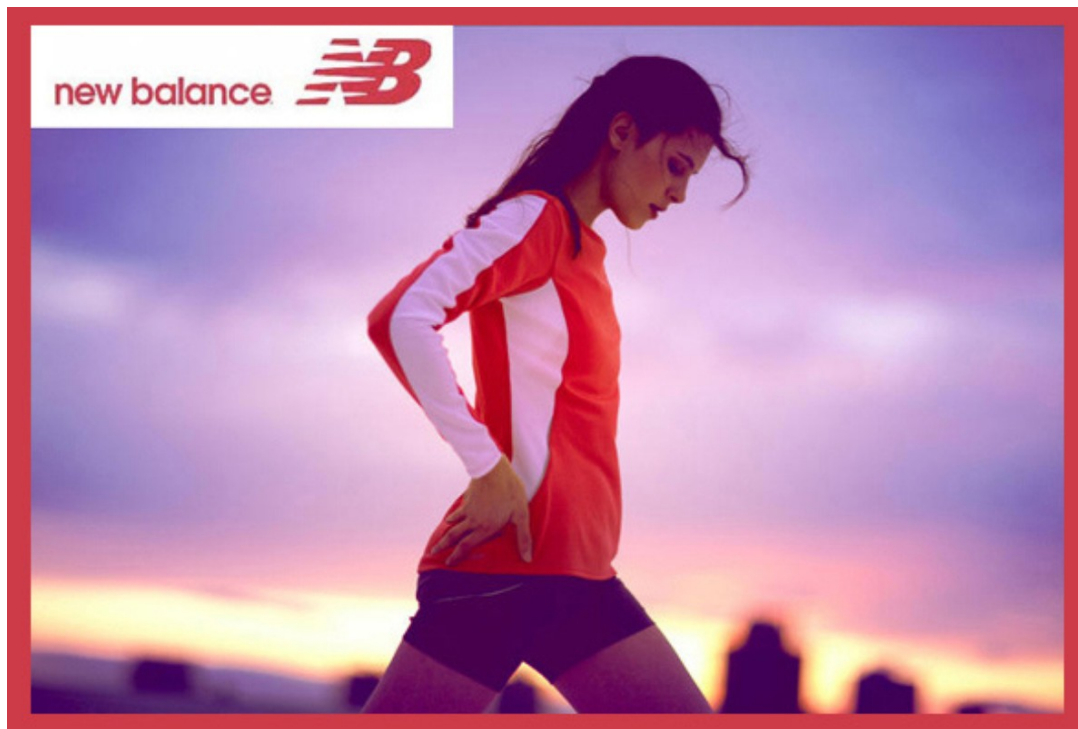
STEP ONE: Part hair down the middle and braid each side, secure with a hair tie.

STEP TWO: Flatten braids and pin to the nape of the neck.

STEP THREE: Smooth hair with the Suave Professionals® Touchable Finish Extra Hair Hairspray.

Don't Miss This

Log on to [facebook.com/suavebeauty](https://www.facebook.com/suavebeauty) for more styling tips, and be sure to check out Clorox's Facebook page on March 14®, 2012 for an exclusive chat with Suave Professionals® stylist Theodore Leaf.



Yael Gitai

www.art-dept.com

Art Department



Yael Gitai

www.art-dept.com

Art Department



Yael Gitai

www.art-dept.com